



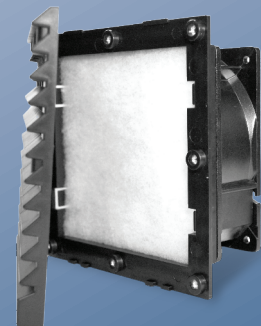
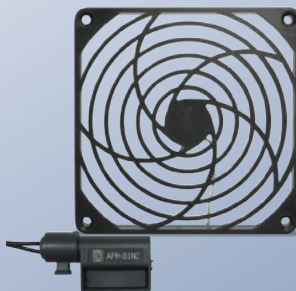
ORION FANS

We'll make YOU a fan.

PRODUCT SELECTOR GUIDE

Easily Access Data Sheets, Inventory... and Buy Now

AC Fans | DC Fans | Fan Trays
Accessories | Blowers





Click on any title below to access more information

Lowest Cost AC Fan Airflow Monitoring System

At \$37.50, the AFM Series is a low cost solution for indicating positive or negative airflow in AC or DC fan/blower applications in servers, telecom switches, power supplies, kiosks and medical equipment. The AFM module operates an optical LED or audible alarm when airflow falls below 8.2 ft/s due to fan filter clogs or foreign materials coming in contact with the fan blade. An AFM Kit is also available including an AFM-01NC, clip, three plastic guards (80, 92, & 120mm), buzzer, LED and holder, switch and power supply.



- Mounts easily via a clip or clamp onto existing systems
- Field retrofittable
- Installs to front or intake side of fan
- Rated to IP20 and NEMA 1 certifications

Lowest Cost Louvered Filter Fan Kits

Consisting of an AC fan, louvered fan guard, filter, metal guard and hardware, these rugged kits are the lowest cost filter fan in the industry. The louvered filter fan kits protect electronic, electrical, and industrial cabinets and enclosures from dust and dirt and are available for 120mm, 172mm, 225mm, 254mm and 280mm AC and fans.



- Filters to 8 microns
- Rated to IP54, IP55, IP56 and/or NEMA 12 standards when used with Orion harsh environment fans
- Kits requiring DC fans are also available upon request

DC Fans for High Static Pressure Environments

Designed for highly restrictive environments found in telecom, medical and industrial applications, Orion's family of high static pressure DC fans, deliver superior airflows up to 283 CFM. The Vane Axial and Super High Performance fan series feature specially designed blades that focus air movement to push/pull air through obstacles to cool radiators, CPUs and other high static pressure applications.



- Highest maximum static pressure in a DC fan package
- Available in 60, 80, 92, and 120mm package sizes

High Airflow Fan Tray Delivers Redundant Power

The front exhaust OA406 Series high airflow AC fan tray is available with up to six-fan positions. Ideal for narrow depth cabinets found in security, audio and A/V applications, the low-cost fan tray comes standard with redundant power capability via an additional universal 90-264 VAC input external power supply or used with a switching 12VDC rail.



- 1U high
- Airflows up to 160 CFM
- Optional redundant 2nd power supply
- Automatic redundant power switching

More Low Cost Ways to Control Fans & Fan Trays

The rack-mounted TCAC001 programmable thermal controller turns fan trays on and off at a selected specific temperature. The OA11/22 AC Fan Speed Control regulates speed for single or multiple fan assemblies.



- Reduce energy consumption
- Control fan noise
- Temperature control
- Fan speed control
- Field selectable

Industry's Lowest Cost Fan Trays

As the industry's largest AC & DC fan tray manufacturer, Orion delivers the lowest cost 3-, 6-, and 9-fan tray solutions for a wide range of rack-mount, ventilation hood and enclosure applications. Orion's Thermalcare Series of modular fan assemblies enable easy expansion with the "add-a-module" feature. The Short Fan Tray Series of 3- and 6-fan assemblies fit any 19" rack with optional "smart" fan control.



- Airflows up to 990 CFM
- Noise levels down to 53dB
- 115VAC and 230VAC versions
- Life expectancy up to 60,000 hours at 25°C





Click on any title below to access more information

Harsh Environment Fans

Orion's comprehensive line of waterproof harsh environment AC fans, DC fans and accessories are designed to protect against dust, moisture, salt fog, salt spray, temperature changes, humidity and more. With the industry's shortest lead times, Orion's harsh environment fans can be quickly integrated into process control, HVAC equipment, industrial and military designs.



- IP55-rated fans
- Salt-fog fans
- All-metal fans

EC Fans & Motorized Impellers

Designed for large, power hungry equipment, Orion's Electronically Commutated (EC) fans and motorized impellers offer a low power, energy-efficient cooling solution. The fans utilize a brushless DC motor and incorporate voltage transformation within the motor to provide a low power, dual speed fan. For custom requirements, Orion's EC fans can be programmed at the factory to deliver even more power savings.



The motorized impellers can be installed in circular, rectangular or scroll shaped housings as well as free air operation environments.

- Available in 200, 225, 280 and 318mm package sizes

IP55-Rated Motorized Impellers

The Orion Fans family of AC motorized impellers provides high airflows up to 1900 CFM and maximum static pressure of 5.4" H₂O. The motorized impeller is designed for electronic cabinet, telecom, networking, air filtration and ventilation systems. Orion Fans ships the required capacitor with all impeller models.



- IP55-rated
- Required capacitor is included with all impeller models
- 190mm - 400mm models in stock

Energy Saving Smart Fans & Fan Trays

Orion Fans "smart" thermal-controlled fans and fan trays can reduce energy costs up to 30% by increasing or decreasing fan speed according to ambient air temperature. These fans feature a low noise profile for sound sensitive applications, and a simple AC input. The ball-bearing design results in reduced noise levels of 37 to 45dB. Smart fan temperature controlled applications include cooling LED/solid state lighting, rack enclosures, data centers, and electric vehicle charging stations



- Reduce energy costs by 30%
- Lower noise
- Extended fan life
- Simple to install with no additional extensions

Higher Voltage DC Fans for Telecom Applications

Orion Fans' 60V DC fans, are designed specifically for telecom applications. Available in several package sizes, the fans operate using input voltage from 36 VDC to 72 VDC, making them suitable for telecommunications equipment due to their ability to accept these higher voltage inputs without sustaining damage. Fans specified for use in telecom applications typically carry a nominal voltage rating of 48 volts; however, when operating in battery mode, telecom systems can experience voltages up to 56 volts, which has the potential to damage a standard 48 VDC fan over time.



- Accepts higher voltage inputs without sustaining damage
- Available special options: tachometer output, locked rotor alarm, IP55-sealing, PWM & constant speed controls

Cost-efficient Sealed Sleeve Fans

A less expensive alternative to ball bearing fans, Orion Fans sealed sleeve fans perform like a ball-bearing fan, but at a significant lower cost. With a longer life expectancy than sleeve bearing fans (up to 50,000 hours), sealed sleeve fans are designed for volume requirements in high performance applications. Available in the most popular DC frame sizes from 40mm to 120mm, the sealed sleeve fans deliver airflows up to 105 CFM.



- Lower cost (30-50% less than ball bearing fans)
- Up to 50,000 hours life expectancy
- Unique patented sealed sleeve technology

Click on any part number below to access product page at orionfans.com/PSG



AC FANS

Broad AC fan selection, short lead times, competitive pricing.

- Airflow from 11-1130 CFM
- Fan diameter sizes from 60mm to 280mm
- Ball bearing or sleeve bearing versions
- Dual voltage versions

AC FANS SERIES	mm (in)	Voltage	Airflow (CFM)
OA60	60x60x30 (2.36x1.20)	115V, 230V	11
OA825	80x80x25 (3.15x1.0)	115V, 230V, 115/230 DV	16 - 25
OA80	80x80x38 (3.15x1.5)	115V, 230V, 115/230 DV	17 - 31
OA80 - Metal	80x80x38 (3.15x1.5)	115V, 230V	18 - 33
OA92	92x92x25 (3.62x1.0)	115V, 230V, 115/230 DV	22 - 35
OA938	92x92x38 (3.62x1.5)	115V, 230V, 115/230 DV	26 - 50
OA938 - Metal	92x92x38 (3.62x1.5)	115V, 230V	27 - 55
OA125	120x120x25 (4.7x1.0)	115V, 230V, 115/230 DV	42 - 81
OA109 AP - Temp Control	120x120x38 (4.7x1.5)	115V, 230V	63 - 97
OA109	120x120x38 (4.7x1.5)	115V, 230V, 115/230 DV	51 - 110
OA109 AIOS	120x120x38 (4.7x 1.5)	115V, 230V	75 - 99
OA109(XC)	120x120x38 (4.7x1.5)	115V, 230V	110 - 131
OA109 - Metal	120x120x38 (4.7x1.5)	115V, 230V	58 - 105
OA109AP - IP55	120x120x38 (4.7x1.5)	115V, 230V	106
OA109AP - Salt Fog	120x120x38 (4.7x1.5)	115V, 230V	106
OA4715	120x120x38 (4.7x1.5)	115V, 230V	111
OA119	127x127x38 (5.0x1.5)	115V, 230V,115/230 DV	74 - 130
OA119 - Metal	127x127x38 (5.0x1.5)	115V, 230V	65 - 128
OA5920	172x150x51 (6.7x5.9x2.0)	115V, 230V	180
OA172SAPL	172x150x38 (6.7x5.9x1.5)	115V, 230V	108 - 228
OA172SAP	172x150x51 (6.7x5.9x2.0)	115V, 230V	135 - 235
OA172SAP (XC)	172x150x51 (6.7x5.9x2.0)	115V, 230V	300
OA172SAP - Metal	172x150x51 (6.7x5.9x2.0)	115V, 230V	95 - 210
OA172SAP - IP55	172x150x51 (6.7x5.9x2.0)	115V, 230V	226
OA172SAP - Salt Fog	172x150x51 (6.7x5.9x2.0)	115V, 230V	226
OA172SAP - (XC) Salt Fog	172x150x55 (6.7x5.9x2.2)	115V, 230V	293
OA172SAPL - IP55	172x150x38 (6.7x5.9x1.5)	115V, 230V	103 - 228
OA172AP	172x172x51 (6.7x2.0)	115V, 230V	135 - 235
OA172 - Metal	172x172x51 (6.7x2.0)	115V, 230V	105 - 215
OA162 - Metal	172x172x55 (6.7x2.17)	115V, 230V	100 - 210
OA162	172x172x55 (6.7x2.17)	115V, 230V	241
OA180AP	172x172x89 (6.9x3.5)	115V, 230V	375
OA180AN - Metal	176x176x89 (6.9x3.5)	115V, 230V	175 - 380
OA180ANL - Metal	180x180x65 (7.1x2.56)	110V, 240V	185 - 400
OA180APL	180x180x65 (7.1x2.6)	115V, 230V	210 - 405
OA180 - IP55	180x180x90 (7.1x3.5)	230V	460
OA200AN - Metal	200x220x70 (7.8x2.8)	115V, 230V	230 - 485
OA205AN - Metal	205x72 (8.0x2.8)	115V, 230V	310 - 650
OA225 - Metal	225x225x80 (8.85x3.15)	115V, 230V	530 - 600
OA254	254x89 (10x3.5)	115V, 230V	460 - 547
OA254 (XC)	254x89 (10x3.5)	115V, 230V	320 - 850
OA254AP - Salt-Fog	254x89 (10x3.5)	115V, 230V	550
OA2543AN - Metal	254x89 (10x3.5)	115V, 230V	460 - 930
OA2547AN - Metal	254x89 (10x3.5)	115V, 230V	500 - 1000
OA280 - Metal	280x280x80 (11x3.15)	115V, 230V	1130



Click on any part number below to access product page



DC FANS

Standard, special function and custom DC fans with JIT delivery worldwide

- Airflow from 1.8 to 1200 CFM
- Voltages from 5VDC to 60VDC
- Fan diameter sizes from 25mm to 280mm
- Ball, sealed sleeve or sleeve bearing versions

DC FAN	mm (in)	Voltage	Airflow (CFM)
OD2510	25x25x10 (1x0.39)	5V, 12V	1.8 - 2.7
OD3010	30x30x10 (1.18x0.39)	5V, 12V	3.3 - 4.6
OD3510	35x35x10 (1.18x0.39)	5V, 12V	3 - 6
OD4010*	40x40x10 (1.57x0.39)	5V, 12V, 24V	5 - 7
OD4010-SS	40x40x10 (1.57x0.40)	12V, 24V	6.7
OD4015	40x40x15 (1.57x0.79)	5V, 12V, 24V	6.8 - 8.5
OD4020*	40x40x20 (1.57x0.79)	5V, 12V, 24V	7 - 9
OD4020-SS	40x40x20 (1.57x0.79)	12V, 24V	9
OD4028	40x40x28 (1.57x1.1)	5V, 12V, 24V	7 - 11
OD4028(XC)*	40x40x28 (1.57x1.1)	12V	26.5
OD5010	50x50x10 (1.97x0.39)	5V, 12V, 24V	9 - 11
OD5015	50x50x15 (2.04x0.39)	12V	14
OD5210	52x52x10 (2.04x0.39)	5V, 12V	10 - 12
OD6010	60x60x10 (2.36x0.39)	5V, 12V	14 - 21
OD6015	60x60x15 (2.36x0.59)	5V, 12V, 24V	11 - 18
OD6020	60x60x20 (2.36x0.79)	12V, 24V	13 - 18
OD6025*	60x60x25 (2.36x1.0)	5V, 12V, 24V, 48V	13 - 28
OD6025-60LB	60x60x25 (2.36x1.0)	60V	26
OD6025 SS	60x60x25 (2.26x1.0)	12V, 24V	25
OD6038VXC*	60x60x38 (2.26x1.5)	12V, 24V	38 - 61
OD6038 High Static Pressure	60x60x38 (2.36x1.5)	12V	76 - 86
OD7015	70x70x15 (2.76x0.60)	12V	28.5 - 41
OD7020	70x70x20 (2.76x0.79)	12V	41 - 45
OD7025	70x70x25 (2.76x1.0)	12V, 24V	33 - 60
OD8015	80x80x15 (3.15x0.59)	12V, 24V	20 - 30
OD8025*	80x80x25 (3.15x1.0)	5V, 12V, 24V	19 - 44
OD8025 SS	80x80x25 (3.15x1.0)	12V, 24V	40
OD8032	80x80x32 (3.15x1.25)	12V, 24V, 48V	40 - 50
OD8038	80x80x38 (3.15x1.5)	12V, 24V	38 - 61
OD8038VXC*	80x80x38 (3.15x1.5)	12V, 24V, 48V	76 - 112
OD8038 High Static Pressure	80x80x38 (3.15x1.5)	12V, 48V	141
OD9220	92x92x20 (3.62x0.79)	12V, 24V	28 - 32
OD9225*	92x92x25 (3.62x1.0)	12V, 24V, 48V	39 - 60
OD9225 SS	92x92x25 (3.62x1.0)	12V, 24V	52
OD9225 - 60HB	92x92x25 (3.6x1.0)	60V	69
OD9238VXC*	92x92x38 (3.62x1.0)	12V, 24V, 48V	108 - 135
OD9238 High Static Pressure	92x92x38 (3.62x1.5)	12V	174
OD1225	120x120x25 (4.7x1.0)	12V, 24V	72 - 89
OD1225 SS	120x120x25 (4.7x1.0)	12V, 24V	85
OD1232	120x120x32 (4.7x1.25)	12V, 24V, 48V	93 - 120
OD1238*	120x120x38 (4.7x1.5)	12V, 24V, 48V	53 - 105
OD1238AP	120x120x38 (4.7x1.5)	12V, 24V, 48V	70 - 140

DC FAN	mm (in)	Voltage	Airflow (CFM)
OD1238 High Static Pressure	120x120x38 (4.7x1.5)	12V	207
OD1238VXC*	120x120x38 (4.7x1.5)	12V, 24V, 48V	140 - 283
OD1238 SS	120x120x38 (4.7x1.5)	12V, 24V	96 - 105
OD1238XC	120x120x38 (4.7x1.5)	12V, 24V, 48V	130 - 220
OD1238 Super High*	120x120x38 (4.7x1.5)	12V, 24V, 48V	154
OD1238-60HB*	120x120x38 (4.7x1.5)	60V	115
OD1238 HTB	120x120x38 (4.7x1.5)	12V, 24V, 48V	90
OD127 (XC)	127x127x38 (5x1.5)	12V, 24V, 48V	107 - 242
OD127AP	127x127x38 (5x1.5)	12V, 24V, 48V	86 - 140
OD172SAPL	172x150x38 (6.7x5.9x1.5)	12V, 24V, 48V	120 - 225
OD172SAP	172x150x51 (6.7x5.9x2.0)	12V, 24V, 48V	125 - 300
OD172SAP (XC)	172x150x51 (6.7x5.9x2.0)	12V, 24V, 48V	232 - 307
OD180	180x180x65 (7.1x2.6)	12V, 24V, 48V	300 - 470
OD254	254x89 (10x3.5)	12V, 24V, 48V	550 - 830
OD280	280x89 (11x3.5)	12V, 24V, 48V	780 - 1200



* These models can be salt-fog and/or IP55 rated

Click on any part number below to access product page



FAN TRAYS

Flexibility. Efficiency. Very cost-effective.

- Pre-wired modular design
- Remote monitoring and noise reduction versions available
- Configurable versions

AC FAN TRAY SERIES	Voltage	# of Fans	Airflow (CFM)	Part No.
OA300	115VAC	3	330	FTA-03115-018(BK)
OA300S		3	330	FTA-03115-014(BK)
OA300ST-120		3	310	FTA-018C311(HF)
OA300ST-12003		3	190 - 300	FTA-018C311HF(03)
OA300ST-12004		3	190 - 300	FTA-018C311HF(04)
OA600S		6	660	FTA-06115-014(BK)
OA600ST-120		6	620	FTA-018C611(HF)
OA600		6	660	FTA-06115-018(BK)
OA900		9	990	FTA-09115-018(BK)
OA300ST-230		230VAC	3	310
OA300ST-23003	3		190 - 300	FTA-018C322HF(03)
OA300ST-23004	3		190 - 300	FTA-018C322HF(04)
OA302	3		330	FTA-03220-018(BK)
OA302S	3		330	FTA-03220-014(BK)
OA600ST-230	6		620	FTA-018C622(HF)
OA602	6		660	FTA-06220-018(BK)
OA602S	6		660	FTA-06220-014(BK)
OA902	9		990	FTA-09220-018(BK)
OA300-DV	115/230VAC		3	330
OA300S-DV		3	330	FTA-03DV-014(BK)
OA600-DV		6	660	FTA-06DV-018(BK)
OA600S-DV		6	660	FTA-06DV-014(BK)
OA900-DV		9	990	FTA-09DV-018(BK)
OA406	90-264VAC	6	160	OA406 (NEMA 5-15 plug)
OA406-DUAL	115/230VAC	6	160	with redundant power supply
OA406-PS	Power Supply			converts OA406 to DUAL



FAN SPEED CONTROL UNIT	Voltage
OA11/22CB	120/220V



THERMAL CONTROLLER	Voltage	Output
TCAC001	120/230V	10 Amps

DC FAN TRAY SERIES	Voltage	# of Fans	Airflow (CFM)	Part No.	
OD300-12	12VDC	3	330	FTD-03012-018(BK)	
OD300S-12		3	330	FTD-030 12 -014(BK)	
OD600-12		6	660	FTD-06012-018(BK)	
OD600S-12		6	660	FTD-060 12-0 14(BK)	
OD900-12	24VDC	9	990	FTD-09012-018(BK)	
OD300-24		3	330	FTD-03024-018(BK)	
OD300S-24		3	330	FTD-03024-014(BK)	
OD600-24		6	660	FTD-06024-018(BK)	
OD600S-24		6	660	FTD-06024-014(BK)	
OD900-24		9	990	FTD-09024-018(BK)	
OD300-48		48VDC	3	330	FTD-03048-018(BK)
OD300S-48			3	330	FTD-03048-014(BK)
OD600-48	6		660	FTD-06048-018(BK)	
OD600S-48	6		660	FTD-06048-014(BK)	
OD900-48	9		990	FTD-09048-018(BK)	



POWER DISTRIBUTION UNITS	Voltage	# of Outlets
OSP-V-20-11-16-N1	115	16
OSP-V-16-23-16-N1	230	16
OSP-H-16-23-08-N1	230	8
OSP-H-15-11-08-N1	115	8



Fan trays are UL Listed by the part number only. Model numbers are assigned as configuration descriptors only and do not affect UL certifications.

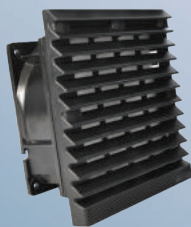
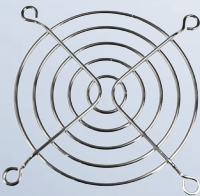
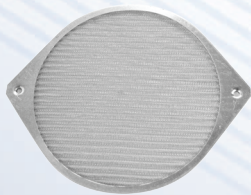
Click on any part number below to access product page



ACCESSORIES

Manufactured by Orion Fans - Optimized for Orion fans

- Fan guards
- Fan filters
- Fan kits
- Air flow monitors



Fan Size	Matching Orion Fan Series	Steel Wire Guards	Wire Mesh Guards	Plastic Guards	Push-on Guards	Louvered Guards	Filter Kits
25mm (1.0")	OD2510	G25-2					
40mm (1.57")	OD4010 OD4020 OD4028	G40-2		G40P			GRM40-30 GRM40-45
50mm (2.05")	OD5010	G50-3					
60mm (2.36")	OA60 OD6010 OD6015 OD6020 OD6025 OD6038	G60-4	WMG60M WMG60B	G60P			GRM60-30 GRM60-45
80mm (3.15")	OA80 OA825 OD8015 OD8025 OD8032 OD8038	G80-18 G80-18B	WMG80M WMG80B	G80P	G80POG	LFG80*	GRM80-30 GRM80-45
92mm (3.62")	OA92 OA938 OD9220 OD9225 OD9238	G92-16 G92-16B	WMG92M WMG92B	G92P	G92POG	LFG92*	GRM92-30 GRM92-45
120mm (4.7")	OA109 OA125 OA4715 OD1225 OD1238	G109-15-1 G109-15B-1 G109-15A G109-15AB	WMG120M WMG120B	G120P	G120POG	LFG120B*	GRM120-30 GRM120-45
127mm (5.0")	OA119 OD127	G119-8 G119-13	WMG127M WMG127B		G127POG		
172mm (6.7")	OA162 OA172 OA5920 OD172	G172-10H G172-10HB G172-10HA G172-10HAB G172-10LN	WMG172M WMG172B	G172P		LFG172B*	GRM172-30 GRM172-45
180mm (7.0")	OA180 OD180	G180-11					
225mm (8.85")	OA225	G225				LFG225B*	
254mm (10.0")	OA254 OA2543AN OA2547AN OD254	G254-10 G254-10P				LFG254B*	
280mm (11.0")	OA280	G280				LFG280B*	

*Available in black or gray

LOUVERED FILTER FAN KITS	mm (in)	Protection	Voltage	Airflow (CFM)
OA109LFG	148.5x148.5x76.5	IP54/55	115V, 230V	64
OA172LFG	204x204x77.5	IP54	115V, 230V	141
OA172LFG XC	204x204x77.5	IP54	115V, 230V	180
OA225LFG	323x323x141.5	IP55	115V, 230V	318 - 360
OA254LFG	320x320x122.5	IP54	115V, 230V	276 - 328
OA254LFG XC	320x320x122.5	IP54	115V, 230V	510
OA280LFG	323x323x141.5	IP55	115V, 230V	714 - 678

AIR FLOW MONITORS	
AFM-01NC	Air Flow Monitor Switch, NC w/ clip and clamp
AFM-01NO	Air Flow Monitor Switch, NO w/ clip and clamp
AFM-80NC	Air Flow Monitor Switch, NC w/ 80mm guard
AFM-80NO	Air Flow Monitor Switch, NO w/ 80mm guard
AFM-92NC	Air Flow Monitor Switch, NC w/ 92mm guard
AFM-92NO	Air Flow Monitor Switch, NO w/ 92mm guard
AFM-120NC	Air Flow Monitor Switch, NC w/ 120mm guard
AFM-120NO	Air Flow Monitor Switch, NO w/ 120mm guard
AFM-KIT	Includes an AFM-01NC, clip, three plastic guards (80, 92, & 120mm), buzzer, LED and holder, switch and power supply.



Click on any part number below to access product page



BLOWERS

- AC and DC Blowers
- Motorized Impellers
- Crossaxial Blowers
- Fan Tray Blower Assemblies

AC BLOWERS	Voltage	Airflow (CFM)
OAB800AN-11-1B	115V	30
OAB800AN-11-2B	115V	22
OAB800AN-11-3B	115V	14
OAB800AN-22-1B	220V	30
OAB800AN-22-2B	230V	22
OAB800AN-22-3B	230V	14
OAB908AN-11-1/2	120V	100/75
OAB908AN-11-3	115V	50
OAB908AN-22-1/2	220V	100/75
OAB908AN-22-3	230V	50
CROSSAXIAL BLOWERS	Voltage	Airflow (CFM)
OAB30	120V, 230V	14 - 60
OAB40	120V, 230V	21 - 70
OAB50	120V, 230V	24 - 110
OAB60	120V, 230V	63 - 180
MOTORIZED* IMPELLERS	Voltage	Airflow (CFM)
OAB190	120V, 230V	370
OAB220	120V, 230V	530
OAB22599	115V, 230V	770
OAB250	115V, 230V	850
OAB318	115V, 230V	1015/1165
OAB360	115V, 230V	1645
OAB400	230V	1900

*Required capacitor is included with all motorized impellers
Optional metal duct rings available

All Orion blowers are designed to meet UL, cUL, TUV, VDE and CE standards
Other blower models and configurations available upon request.



DC BLOWERS	Voltage	Airflow (CFM)
ODB5009	5V, 12V	3
ODB5115	12V	2.4 - 4.2
ODB600PT	12V, 24V	20 - 25 - 35
ODB6015-12HHB02A	12V	7.45
ODB7530	12V, 24V	10
ODB9733	12V, 24V	33
ODB1232	12V, 24V, 48V	25 - 33

FAN TRAY BLOWER ASSEMBLIES	Voltage	Airflow (CFM)
OMB5200-120	115VAC	340
OMB5200-230	230VAC	340



ORION FANS

10557 Metric Drive
Dallas, Texas 75243
800-323-2439 (Toll Free)
214-340-0265 (P)
214-340-5870 (F)
www.orionfans.com

Knight Electronics
Europe Stocking Location
Solid State Supplies

